

BRIDGNORTH TAE KWON-DO



www.bridgnorthtaekwondo.com – 07866 922 464 – bridgnorthtaekwondo@hotmail.co.uk

Safeguarding Children Policy and Procedures

Last updated April 2024

1. Commitment to Safeguarding

At Bridgnorth Tae Kwon-Do we are committed to safeguarding children and young people under the age of eighteen and we expect everyone who works in our club to share this commitment. Adults in our club take all welfare concerns seriously and encourage children and young people to talk to us about anything that worries them. We will always act in the best interest of the child.

Index

Commitment to Safeguarding

Principles

Legislation & Statutory Guidance

Definitions

Types of abuse and neglect

Signs and indicators of abuse and neglect

How to respond to a concern

Recording

Codes of Ethics

Safer recruiting

Supervision, Support and training

Whistleblowing

Complaints

Links to other procedures

2. Principles

Bridgnorth Tae Kwon-Do acknowledges the duty of care to safeguard and promote the welfare of children and is committed to ensuring safeguarding practice reflects statutory responsibilities, government guidance Working Together to Safeguard Children 2018 and complies with best practice requirements.

The policy recognises that the welfare and interests of children are paramount in all circumstances. It aims to ensure that regardless of age, ability or disability, gender reassignment, race, religion or belief, sex or sexual orientation, socio-economic background, all children:

- have a positive and enjoyable experience in a safe and child centered environment.
- are protected from abuse whilst participating in activity organised within Bridgnorth Tae Kwon-Do premises or outside.

Bridgnorth Tae Kwon-Do acknowledges that some children, including disabled children and young people or those from ethnic minority communities, can be particularly vulnerable to abuse and we accept the responsibility to take reasonable and appropriate steps to ensure their welfare. As part of our safeguarding policy Bridgnorth Tae Kwon-Do will

- promote and prioritise the safety and wellbeing of children and young people.
- ensure everyone understands their roles and responsibilities in respect of safeguarding and is provided with appropriate learning opportunities to recognise, identify and respond to signs of abuse, neglect and other safeguarding concerns relating to children and young people.
- ensure appropriate action is taken in the event of incidents/concerns of abuse and support provided to the individual/s who raise or disclose the concern.
- ensure that confidential, detailed and accurate records of all safeguarding concerns are maintained and securely stored.
- prevent the employment/deployment of unsuitable individuals.

- ensure robust safeguarding arrangements and procedures are in operation.

The policy and procedures will be widely promoted and are mandatory for everyone involved in Bridgnorth Tae Kwon-Do. Failure to comply with the policy and procedures will be addressed without delay and may ultimately result in dismissal/exclusion from the organisation.

3. **Legislation & Statutory Guidance**

- Human Rights Act 1998
- Children Act 1989
- Children Act 2004
- Working Together to Safeguard Children 2018
- Keeping Children Safe in Education 2018
- Sexual Offences Act 2003
- Data Protection Act 2018

4. **Definitions**

In England, Northern Ireland and Wales a child is someone under the age of 18, whether living with their families, in state care, or living independently (Working Together to Safeguard Children 2018).

This generally applies in Scotland but in some cases, for example for parts of the Scottish Child Protection Process it will be 16.

5. **Types of Abuse and Neglect (according to Keeping Children Safe in Education 2018)**

All club staff and volunteers should be aware that abuse, neglect and safeguarding issues are rarely standalone events that can be covered by one definition or label. In most cases, multiple issues will overlap with one another.

Abuse:

A form of maltreatment of a child. Somebody may abuse or neglect a child by inflicting harm or by failing to act to prevent harm. Children may be abused in a family or in an institutional or community setting by those known to them or, more rarely, by others. Abuse can take place wholly online, or technology may be used to facilitate offline abuse. They may be abused by an adult or adults or by another child or children. 45.

Physical abuse:

A form of abuse which may involve hitting, shaking, throwing, poisoning, burning or scalding, drowning, suffocating or otherwise causing physical harm to a child. Physical harm may also be caused when a parent or carer fabricates the symptoms of, or deliberately induces, illness in a child.

Emotional abuse:

The persistent emotional maltreatment of a child such as to cause severe and adverse effects on the child's emotional development. It may involve conveying to a child that they are worthless or unloved, inadequate, or valued only insofar as they meet the needs of another person. It may include not giving the child opportunities to express their views, deliberately silencing them or 'making fun' of what they say or how they communicate. It may feature age or developmentally inappropriate expectations being imposed on children. These may include interactions that are beyond a child's developmental capability as well as overprotection and limitation of exploration and learning or preventing the child from participating in normal social interaction. It may involve seeing or hearing the ill-treatment of another. It may involve serious bullying (including cyberbullying), causing children frequently to feel frightened or in danger, or the exploitation or corruption of children. Some level of emotional abuse is involved in all types of maltreatment of a child, although it may occur alone.

Sexual abuse:

Involves forcing or enticing a child or young person to take part in sexual activities, not necessarily involving a high level of violence, whether or not the child is aware of what is happening. The activities may involve physical contact, including assault by penetration (for example rape or oral sex) or non-penetrative acts such as masturbation, kissing, rubbing and touching outside of clothing. They may also include non-contact activities, such as involving children in looking at, or in the production of, sexual images, watching sexual activities, encouraging children to behave in sexually inappropriate ways, or grooming a child in preparation for abuse. Sexual abuse can take place online, and technology can be used to facilitate offline abuse. Sexual abuse is not solely perpetrated by adult males. Women can also commit acts of sexual abuse, as can other children. The sexual abuse of children by other children is a specific safeguarding issue.

Related issues

In addition to the above categories, there are other forms of harm or abuse that should involve the police and other organisations working together to protect children. These include:

- Bullying
- Child Sexual Exploitation
- Hate crimes
- Abuse in domestic settings
- Honour based violence
- Forced marriage
- Human trafficking
- Exploitation by radicalisers who promote violence
- Membership of gangs inclined to use violence.

Many of these areas are addressed in local multi-agency child or vulnerable adult safeguarding procedures. You may feel that these situations are so unlikely to arise that you would never be required to respond. However, it is as well to be aware of these other related areas, just in case your suspicions are raised.

Poor practice

Sometimes, your concerns may relate to poor practice, where an adult or another young person's behaviour is inappropriate and may be causing distress to a child or young person. In the application of this policy, poor practice includes any behaviour which contravenes the principles of this document or the relevant Club/School/Academy/NGB Code of Conduct or brings Martial Arts into disrepute, or which infringes an individual's rights. Where poor practice is serious or repeated this could also constitute abuse and should be reported immediately. Examples of poor practice towards students, which should never to be sanctioned include:

- use of excessive, physical or humiliating punishments;
- failure to act when you witness possible abuse or bullying;
- being unaware of, or breaching, any relevant policy such as the Code of Ethics and Conduct;
- spending excessive amounts of time alone with young people away from others;
- inviting or allowing young people into your home where they will be alone with you;
- engaging in rough, physical or sexually provocative activity;
- allowing young people to use inappropriate language unchallenged;
- making sexually suggestive comments even in fun;
- reducing a person to tears as a form of control;

- allowing allegations made by a young person to go unchallenged, unrecorded or not acted upon;
- doing things of a personal nature for young people that they can do for themselves; sharing a bedroom with a young person you are not related to, even with parental permission.

Some participants may require assistance with personal care due to being very young or disabled. If a young person needs this level of support, it should be made clear to their parent/s that this can only be carried out by a designated carer and not by the instructor. Even if the instructor is trained in carrying out personal care tasks, this compromises their role as trainer and places them and the child in a vulnerable position. These support arrangements should clearly be in place and agreed to by all parties prior to the activities commencing.

6. **Signs and Indicators of Abuse and Neglect**

Indicators that a young person may be being abused may include the following:

- unexplained or suspicious injuries such as bruising, cuts or burns, particularly if situated on a part of the body not normally prone to such injuries;
- an injury for which the explanation seems inconsistent;
- the young person describes what appears to be an abusive act involving him/her;
- someone else (a young person or adult) expresses concern about the welfare of another;
- unexplained changes in behaviour (e.g. becoming very quiet, withdrawn or displaying sudden outbursts of temper);
- inappropriate sexual awareness;
- engaging in sexually explicit behaviour;
- sudden or unusual distrust of adults, particularly those with whom a close relationship would normally be expected;
- having difficulty in making friends;
- being prevented from socialising with other young people;
- displaying variations in eating patterns including overeating or loss of appetite;
- or a sudden weight change;
- becoming increasingly dirty or unkempt.

It should be recognised that this list is not exhaustive and the presence of one or more of the indicators is not proof that abuse is actually taking place. A good working relationship with parent/guardians will help to identify any other concerns that a young person may be

experiencing. For example, a family bereavement which could cause some of the changes listed above.

Remember it is not the responsibility of Bridgnorth Tae Kwon-Do to decide if child abuse is occurring but it is their responsibility to act on any concerns by reporting them.

7. What to do if you have a concern or someone raises concerns with you.

Bridgnorth Tae Kwon-Do recognises '*everyone who works with children has a responsibility for keeping them safe. No single practitioner can have a full picture of a child's needs and circumstances and, if children and families are to receive the right help at the right time, everyone who comes into contact with them has a role to play in identifying concerns, sharing information and taking prompt action*' (page 11 para 16 Working Together to Safeguard Children 2018).

Whilst accepting this duty it is recognized Bridgnorth Tae Kwon-Do is not responsible for deciding if abuse has occurred. It does however have a duty to respond and report concerns.

Bridgnorth Tae Kwon-Do will have an appropriately trained Designated Safeguarding Lead and Deputy.

All safeguarding concerns and poor practice occurrences, except if the issue concerns those individuals, **must** be reported to the DSL / Deputy. This includes issues raised concerning the activities of instructors or volunteers or, where there are concerns outside of Bridgnorth Tae Kwon-Do (for example at home, school or in the wider community). Where there is an allegation against an instructor or volunteer who works with children at Bridgnorth Tae Kwon-Do the DSL/Deputy must report the matter to the Local Authority Designated Officer.

Instructors and volunteers must also report the following to the DSL / Deputy and make a written record of what they have done, seen or heard:

- They have accidentally hurt a child;
- a child seems distressed in any manner;
- a child appears to be sexually aroused by their actions;
- a child misunderstands or misinterprets something they have said or done.

If you think a child is in immediate danger or requires medical attention, you should call the emergency services on 999. You can also ring the NSPCC helpline on 0808 800 5000 to report

immediate risks. This is an immediate responsibility and will take priority over informing the Designated Safeguard Lead or Deputy.

8. How to respond to a concern

It is always difficult to hear about or witness harm or abuse experienced by a child or young person. The following points will be helpful for both you and the child should they choose to disclose abuse to you:

- Stay calm.
- Listen carefully to what is said and try not to interrupt.
- Find an appropriate point early on to explain that it is likely that the information will need to be shared with others – do not promise to keep secrets.
- Allow them to continue at their own pace.
- Ask questions for clarification only and avoid asking questions that suggest an answer (leading questions).
- Reassure them that they are not to blame and have done the right thing in telling you. If the concern is serious explain that you will need to get support from other trained people to help keep the child safe. This must be shared even if the child doesn't want you to tell anyone else.
- Tell them what you will do next and with whom the information will be shared. If they are adamant that they do not wish the information to be shared, explain that you will have to tell your Designated Safeguarding Lead and that it will be discussed further with them.
- Be aware of the possibility of forensic evidence if the disclosure relates to a recent incident of physical harm or injury and try to protect any supporting materials e.g. bedding or clothing.
- Contact your Designated Safeguarding Lead.
- Where you are unable to contact your Designated Person, advice can be sought from statutory agencies or the NSPCC Helpline.
- All serious concerns must be referred to statutory agencies.
- Where the concern or allegation is about a member of staff or a volunteer, this must like all other concerns be reported to the Designated Safeguarding Lead (DSL) or Deputy. The DSL if they consider the concern to be serious, for example potentially child abuse or a crime they must report the incident to the Local Authority Designated Officer or the Police.

When a safeguarding concern or poor practice has been identified concerning a specific child the parents/guardians/carers of that child should be notified. Where the DSL/Deputy has reported the

incident to the statutory authorities, advice should be sought from them regarding this duty before notifying the parents/guardians/carers.

Safeguarding Children Flowchart

9. Recording

Should a child make a disclosure a record in writing must be made as soon as possible, using their words as closely as possible and where relevant, using the club report **form**. Note the date, time, any names mentioned, names and addresses to whom the information was given and who else is aware of the allegation. Note or describe clearly any visible injury.

Take care to distinguish between fact, observation, allegation and opinion. It is important that the information you have is accurate.

Recording of any incident, including possible abuse or poor practice incidents, should also follow this procedure. In all situations, including those in which the cause of concern arises either from a disclosure of abuse or from suspicion of abuse, it is vitally important to record the details, regardless of whether they are shared with a statutory agency, as soon as possible using the Incident Referral Form

The record should be clear and factual as it may be needed by child or adult protection agencies and may, in the future, be used as evidence in court. Records should be kept securely and shared only with those who need to know about the incident.

Throughout the process of any safeguarding cases, accurate records should be made and maintained.

Codes of Conduct and Ethics

The codes of conduct and ethics for all those involved at Bridgnorth Tae Kwon-Do can be found as a separate guidance sheet. It is essential these are followed in so the highest possible standards of behaviour and conduct in Martial Arts activities are maintained. The principles must be adhered to at all times so that Martial Arts can be enjoyed by all. All those involved at Bridgnorth Tae Kwon-Do will show their understanding and commitment to the codes of conduct and ethics by signing a copy of the relevant guidance sheet.

Safer Recruiting

At Bridgnorth Tae Kwon-Do we take all reasonable steps to ensure unsuitable people are prevented from working with children. Whilst there may be some reservations that volunteers could be put off by having to go through a recruitment process, it is important to ensure reasonable steps have been taken to identify unsuitable individuals. A guidance sheet can be found which outlines safer recruiting in further detail.

Supervision, support and training

Once recruited, all staff and volunteers at Bridgnorth Tae Kwon-Do will be well informed, trained, supervised and supported to ensure that they effectively safeguard children and know how to respond to any concerns.

Bridgnorth Tae Kwon-Do will ensure that training and resources are available to encourage the development of staff and volunteers. This will include:

- an induction to the work and the club
- a trial period in which to develop skills whilst supervised
- ongoing support and monitoring

There are currently no formal qualifications specifically for safeguarding and protecting children in sport. However, training developed by sports and other organisations is available to strengthen the skills and knowledge of the sporting children's workforce to safeguard children and young people. Training plays an important role in equipping staff and volunteers to do their job safely and effectively. Different safeguarding training is available depending on the person's role.

Whistleblowing

It's important that people within Bridgnorth Tae Kwon-Do have the confidence to come forward to speak or act if they're unhappy with anything.

Whistleblowing occurs when a person raises a concern about dangerous or illegal activity, or any wrongdoing within their sports organisation. The NSPCC has a [whistleblowing advice line](#) to support professionals who have concerns about how child protection issues are being handled in their own or another organisation.

More detail can be found on the Whistleblowing Guidance Sheet.

Complaints

In order to ensure we develop an open culture where children and staff feel able to express any concerns, we have a procedure for dealing with complaints from a child, worker, volunteer, parent or carer.

This should be linked to the organisation's complaints procedures, ensuring the provision of support and advocacy for the people involved.

Links to other organisational procedures

It's useful to cross-reference other relevant organisational policies, including your:

- equity policy
- complaints and grievance procedures
- disciplinary procedures
- health and safety policy
- Adults at Risk Safeguarding Policy

Useful contacts

Bridgnorth Tae Kwon-Do Welfare Officer

- Name: Anna Bradford
- Email: bridgnorthtaekwondo@hotmail.co.uk
- Telephone: 07866 922464

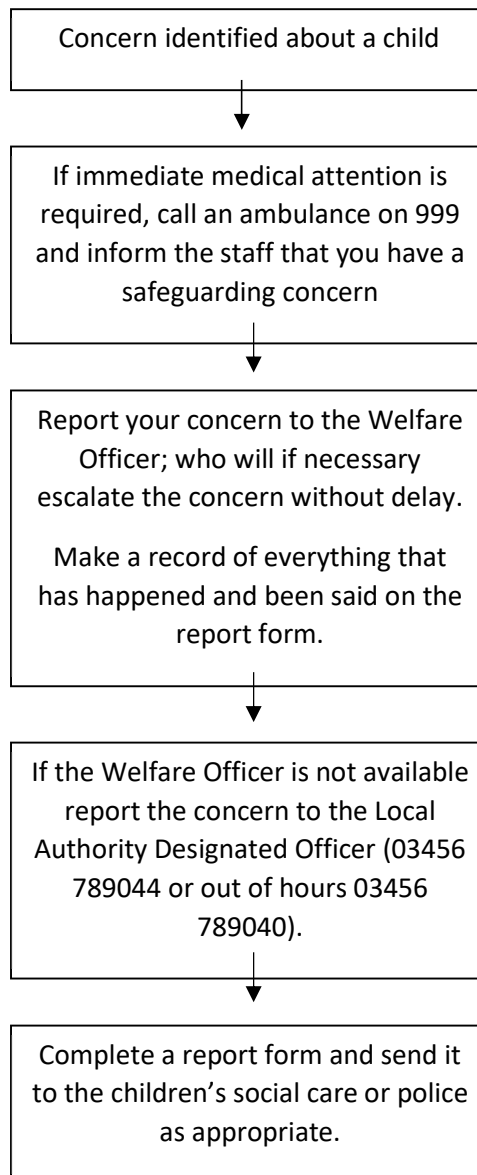
Local Authority Safeguarding Lead (for Shropshire)

- 03456 789044
- Our of hours: 03456 789040

NSPCC

- 0808 800 5000
- help@nspcc.org.uk

Flowchart



BRIDGNORTH TAE KWON-DO



www.bridgnorthtaekwondo.com – 07866 922 464 – bridgnorthtaekwondo@hotmail.co.uk

Safeguarding Policy - Adults Policy and Procedures Last Updated April 2024

Introduction

Bridgnorth Tae Kwon-Do is committed to creating and maintaining a safe and positive environment and accepts our responsibility to safeguard the welfare of all adults involved in Tae Kwon- Do in accordance with the Care Act 2014.

Bridgnorth Tae Kwon-Do's safeguarding adults policy and procedures apply to all individuals involved in Bridgnorth Tae Kwon-Do.

Bridgnorth Tae Kwon-Do will encourage and support partner organisations, including clubs, counties, suppliers, and sponsors to adopt and demonstrate their commitment to the principles and practice of equality as set out in this safeguarding adults policy and procedures.

Index:

Introduction

Principles

Guidance and Legislation

Definitions

Types of abuse and neglect

Signs and indicators of abuse

What to do if you have a concern

How to record a disclosure

Safeguarding Adults Flow Chart

Roles and responsibilities

Good practice, poor practice and abuse

Relevant policies

Further Information

Appendix 1 – Incident Report Form

Appendix 2 – Guidance and information

- Capacity – Guidance on Making Decisions
- Understanding the MCA
- Making Decisions
- Consent and Information Sharing
- Making Safeguarding Personal
- Consent

Appendix 3 – Legislation and Government Initiatives

Appendix 4 – Useful Contacts

1. Principles

The guidance given in the policy and procedures is based on the following principles:

- All adults, regardless of age, ability or disability, gender, race, religion, ethnic origin, sexual orientation, marital or gender status have the right to be protected from abuse and poor practice and to participate in an enjoyable and safe environment.
- Bridgnorth Tae Kwon-Do will seek to ensure that our sport is inclusive and make reasonable adjustments for any ability, disability or impairment, we will also commit to continuous development, monitoring and review.
- The rights, dignity and worth of all adults will always be respected.
- We recognise that ability and disability can change over time, such that some adults may be additionally vulnerable to abuse, in particular those adults with care and support needs
- We all have a shared responsibility to ensure the safety and well-being of all adults and will act appropriately and report concerns whether these concerns arise within Bridgnorth Tae Kwon-Do for example inappropriate behaviour of a coach, or in the wider community.
- All allegations will be taken seriously and responded to quickly in line with Bridgnorth Tae Kwon-Do's Safeguarding Adults Policy and Procedures.
- Bridgnorth Tae Kwon-Do recognises the role and responsibilities of the statutory agencies in safeguarding adults and is committed to complying with the procedures of the Local Safeguarding Adults Boards.

The six principles of adult safeguarding

The Care Act 2014 sets out the following principles that should underpin safeguarding of adults

- **Empowerment** - People being supported and encouraged to make their own decisions and informed consent.
"I am asked what I want as the outcomes from the safeguarding process and these directly inform what happens."
- **Prevention** – It is better to take action before harm occurs.
"I receive clear and simple information about what abuse is, how to recognise the signs and what I can do to seek help."
- **Proportionality** – The least intrusive response appropriate to the risk presented.
"I am sure that the professionals will work in my interest, as I see them and they will only get involved as much as needed."
- **Protection** – Support and representation for those in greatest need.
"I get help and support to report abuse and neglect. I get help so that I am able to take part in the safeguarding process to the extent to which I want."
- **Partnership** – Local solutions through services working with their communities. Communities have a part to play in preventing, detecting and reporting neglect and abuse
"I know that staff treat any personal and sensitive information in confidence, only sharing what is helpful and necessary. I am confident that professionals will work together and with me to get the best result for me."
- **Accountability** – Accountability and transparency in delivering safeguarding.
"I understand the role of everyone involved in my life and so do they."

Making Safeguarding personal

'Making safeguarding personal' means that adult safeguarding should be person led and outcome focussed. It engages the person in a conversation about how best to respond to their safeguarding situation in a way that enhances involvement, choice and control. As well as improving quality of life, well-being and safety.

Wherever possible discuss safeguarding concerns with the adult to get their view of what they would like to happen and keep them involved in the safeguarding process, seeking their consent to share information outside of the organisation where necessary.

Wellbeing Principle

The concept of wellbeing is threaded throughout the Care Act and it is one that is relevant to adult safeguarding in sport and activity. Wellbeing is different for each of us however the Act sets out broad categories that contribute to our sense of wellbeing. By keeping these themes in mind, we can all ensure that adult participants can take part in Bridgnorth Tae Kwon-Do fully.

- Personal dignity (including treatment of the individual with respect)
- Physical and mental health and emotional wellbeing
- Protection from abuse and neglect
- Control by the individual over their day-to-day life (including over care and support provided and the way they are provided)
- Participation in work, education, training or recreation
- Social and economic wellbeing
- Domestic, family and personal domains
- Suitability of the individual's living accommodation
- The individual's contribution to society.

2. Legislation

The practices and procedures within this policy are based on the principles contained within the UK legislation and Government Guidance and have been developed to complement the Safeguarding Adults Boards policy and procedures They take the following into consideration:

- The Care Act 2014
- The Protection of Freedoms Act 2012
- Domestic Violence, Crime and Victims (Amendment) Act 2012
- The Equality Act 2010
- The Safeguarding Vulnerable Groups Act 2006
- Mental Capacity Act 2005
- Sexual Offences Act 2003
- The Human Rights Act 1998
- The Data Protection Act 1998

3. Definitions

To assist working through and understanding this policy a number of key definitions need to be explained:

Adult is anyone aged 18 or over.

Adult at Risk is a person aged 18 or over who:

- Has needs for care and support (whether or not the local authority is meeting any of those needs);
and;
- Is experiencing, or is at risk of, abuse or neglect;
and;
- As a result of those care and support needs is unable to protect themselves from either the risk of, or the experience of, abuse or neglect.

Adult in need of care and support is determined by a range of factors including personal characteristics, factors associated with their situation or environment and social factors. Naturally, a person's disability or frailty does not mean that they will inevitably experience harm or abuse.

In the context of safeguarding adults, the likelihood of an adult in need of care and support experiencing harm or abuse should be determined by considering a range of social, environmental and clinical factors, not merely because they may be defined by one or more of the above descriptors.

In recent years there has been a marked shift away from using the term 'vulnerable' to describe adults potentially at risk from harm or abuse.

Abuse is a violation of an individual's human and civil rights by another person or persons. See section 4 for further explanations.

Adult safeguarding is protecting a person's right to live in safety, free from abuse and neglect.

Capacity refers to the ability to make a decision at a particular time, for example when under considerable stress. The starting assumption must always be that a person has the capacity to make a decision unless it can be established that they lack capacity (MCA 2005).

4. Types of Abuse and Neglect

There are different types and patterns of abuse and neglect and different circumstances in which they may take place. The Care Act 2014 identifies the following as an illustrative guide and is not intended to be an exhaustive list as to the sort of behaviour which could give rise to a safeguarding concern.

Self-neglect – this covers a wide range of behaviour: neglecting to care for one's personal hygiene, health or surroundings and includes behaviour such as hoarding.

Modern Slavery – encompasses slavery, human trafficking, forced labour and domestic servitude. Traffickers and slave masters use whatever means they have at their disposal to coerce, deceive and force individuals into a life of abuse, servitude and inhumane treatment

Domestic Abuse and coercive control – including psychological, physical, sexual, financial and emotional abuse. It also includes so called 'honour' based violence. It can occur between any family members.

Discriminatory Abuse – discrimination is abuse which centres on a difference or perceived difference particularly with respect to race, gender or disability or any of the protected characteristics of the Equality Act.

Organisational Abuse – including neglect and poor care practice within an institution or specific care setting such as a hospital or care home, for example, or in relation to care provided in one's own home. This may range from one off incidents to on-going ill-treatment. It can be through neglect or poor professional practice as a result of the structure, policies, processes and practices within an organisation.

Physical Abuse – including hitting, slapping, pushing, kicking, misuse of medication, restraint or inappropriate sanctions.

Sexual Abuse – including rape, indecent exposure, sexual harassment, inappropriate looking or touching, sexual teasing or innuendo, sexual photography, subjection to pornography or witnessing sexual acts, indecent exposure and sexual assault or sexual acts to which the adult has not consented or was pressured into consenting.

Financial or Material Abuse – including theft, fraud, internet scamming, coercion in relation to an adult's financial affairs or arrangements, including in connection with wills, property, inheritance or financial transactions, or the misuse or misappropriation of property, possessions or benefits.

Neglect – including ignoring medical or physical care needs, failure to provide access to appropriate health social care or educational services, the withholding of the necessities of life, such as medication, adequate nutrition and heating.

Emotional or Psychological Abuse – this includes threats of harm or abandonment, deprivation of contact, humiliation, blaming, controlling, intimidation, coercion, harassment, verbal abuse, isolation or withdrawal from services or supportive networks.

Not included in the Care Act 2014 but also relevant:

Cyber Bullying – cyber bullying occurs when someone repeatedly makes fun of another person online or repeatedly picks on another person through emails or text messages, or uses online forums with the intention of harming, damaging, humiliating or isolating another person. It can be used to carry out many different types of bullying (such as racist bullying, homophobic bullying, or bullying related to special educational needs and disabilities) but instead of the perpetrator carrying out the bullying face-to-face, they use technology as a means to do it.

Forced Marriage – forced marriage is a term used to describe a marriage in which one or both of the parties are married without their consent or against their will. A forced marriage differs from an arranged marriage, in which both parties consent to the assistance of a third party in identifying a spouse. The Anti-social Behaviour, Crime and Policing Act 2014 make it a criminal offence to force someone to marry. The forced marriage of adults with learning disabilities occurs when the adult does not have the capacity to consent to the marriage.

Mate Crime – a 'mate crime' as defined by the Safety Net Project as 'when vulnerable people are befriended by members of the community who go on to exploit and take advantage of them. It may not be an illegal act but still has a negative effect on the individual.' Mate Crime is carried out by someone the adult knows and often happens in private. In recent years there have been a number of Serious Case Reviews relating to people with a learning disability who were murdered or seriously harmed by people who purported to be their friend.

Radicalisation – the aim of radicalisation is to attract people to their reasoning, inspire new recruits and embed their extreme views and persuade vulnerable individuals of the legitimacy of their cause. This may be direct through a relationship, or through social media.

5. Signs and indicators of abuse and neglect

Abuse can take place in any context and by all manner of perpetrator. Abuse may be inflicted by anyone in the club who an athlete comes into contact with. Or club members, workers, volunteers or coaches may suspect that an athlete is being abused or neglected outside of the club setting. There are many signs and indicators that may suggest someone is being abused or neglected, these include but are not limited to:

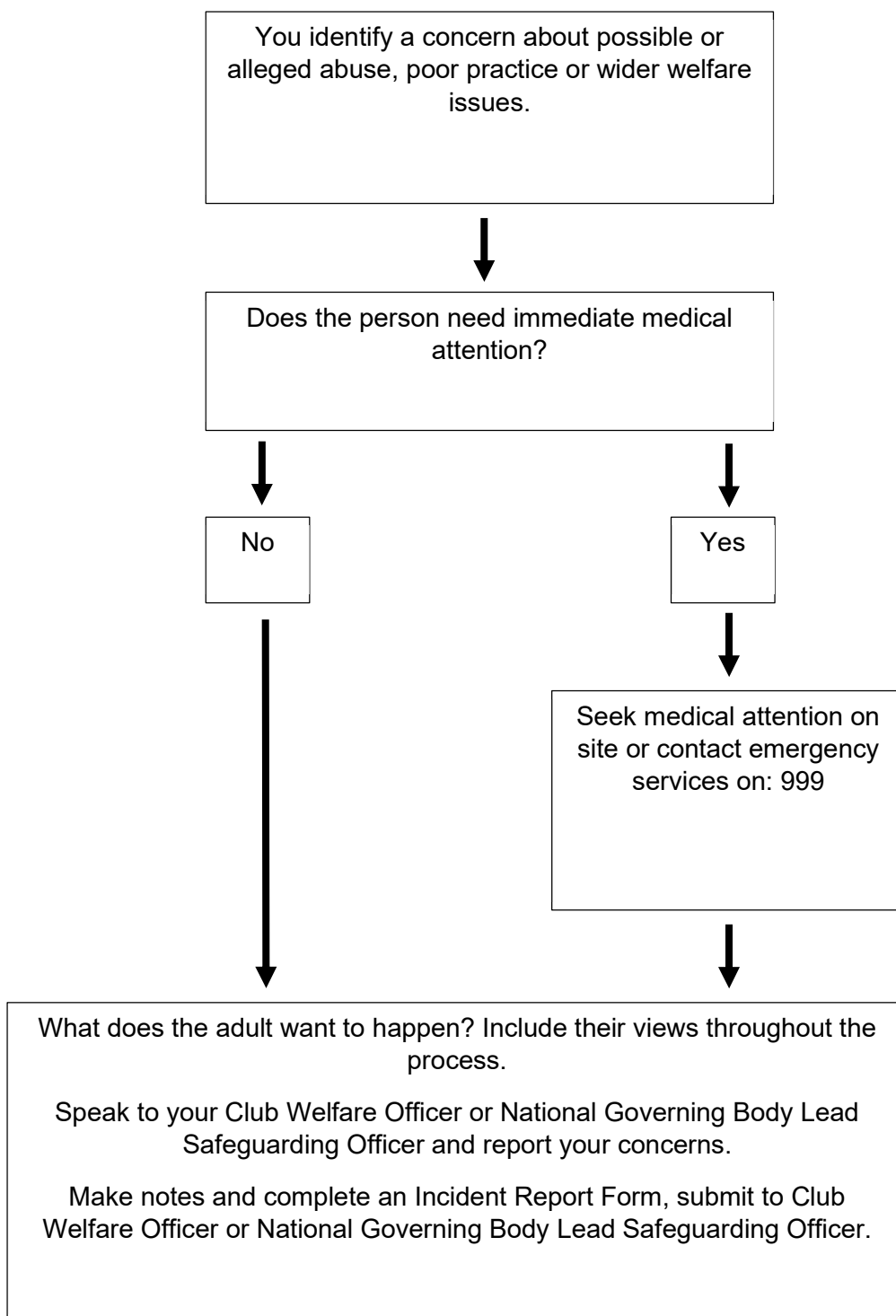
- Unexplained bruises or injuries – or lack of medical attention when an injury is present.
- Person has belongings or money going missing.
- Person is not attending / no longer enjoying their sessions. you may notice that a participant in a team has been missing from practice sessions and is not responding to reminders from team members or coaches.
- Someone losing or gaining weight / an unkempt appearance. this could be a player whose appearance becomes unkempt, does not wear suitable sports kit and deterioration in hygiene.
- A change in the behaviour or confidence of a person. For example, a participant may be looking quiet and withdrawn when their brother comes to collect them from sessions, in contrast to their personal assistant whom they greet with a smile.
- They may self-harm.
- They may have a fear of a particular group or individual.
- They may tell you / another person they are being abused – i.e. a disclosure.
- Harassing of a club member because they are or are perceived to have protected characteristics.
- Not meeting the needs of the participant. E.g. this could be training without a necessary break.
- A coach intentionally striking an athlete.
- This could be a fellow athlete who sends unwanted sexually explicit text messages to a learning disabled adult they are training alongside.
- This could be an athlete threatening another athlete with physical harm and persistently blaming them for poor performance.

6. What to do if you have a concern or someone raises concerns with you.

Safeguarding is everyone's responsibility.

If you have concerns about an adult's safety and or wellbeing you must act on these.

It is not your responsibility to decide whether or not an adult has been abused. It is however your responsibility to act on any concerns.



- It is not your responsibility to decide whether or not an adult has been abused. It is however everyone's responsibility to respond to and report concerns.
- If you are concerned someone is in immediate danger, contact the police on 999 straight away. Where you suspect that a crime is being committed, you must involve the police.
- If you have concerns and or you are told about possible or alleged abuse, poor practice or wider welfare issues you must report this to the Bridgnorth Tae Kwon-Do Welfare Officer, or, if the Welfare Officer is implicated then report to the Principal Instructor.

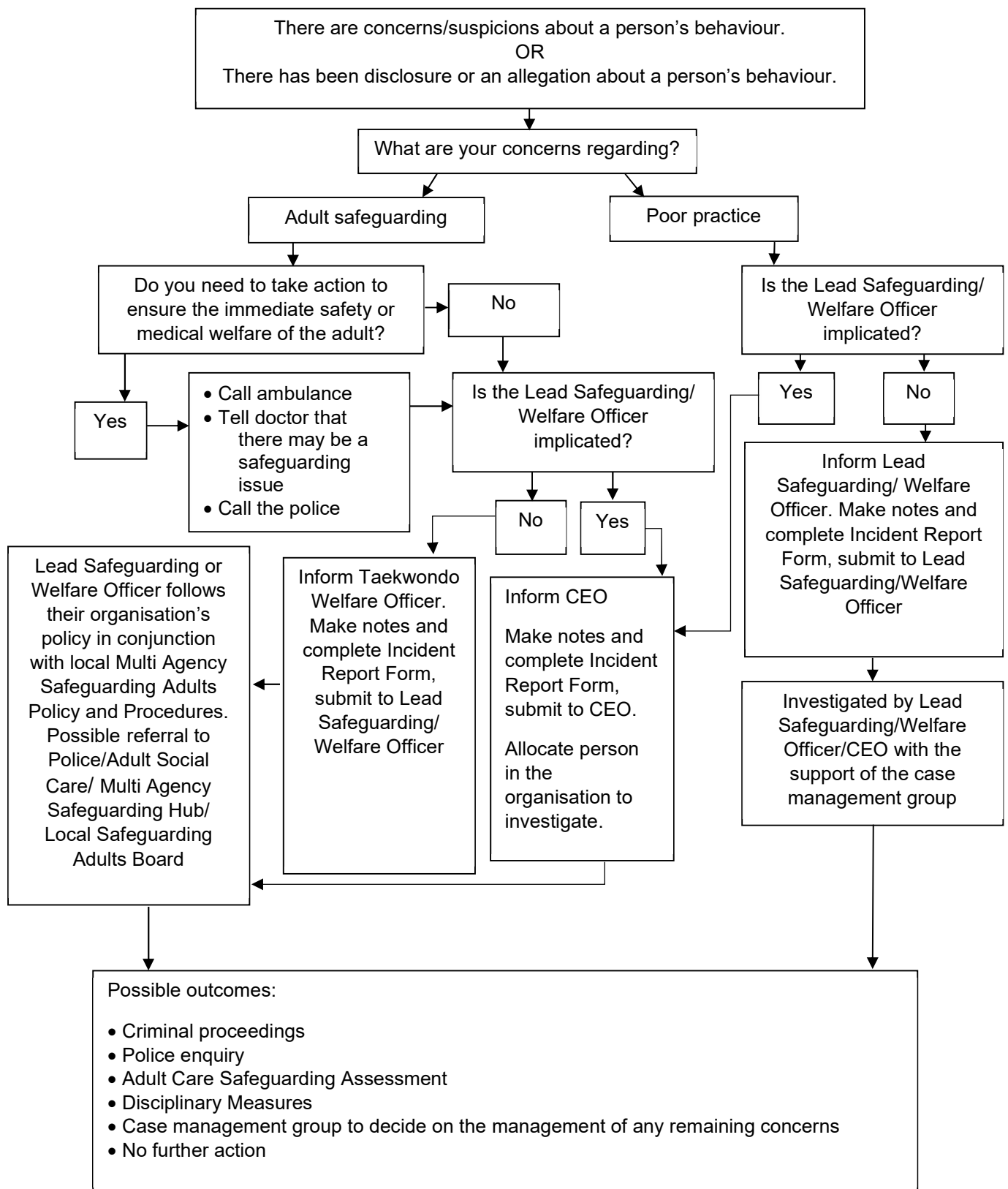
- When raising your concern with the Club Welfare Officer, remember Making Safeguarding Personal. It is good practice to seek the adult's views on what they would like to happen next and to inform the adult you will be passing on your concern and
- It is important when considering your concern that you also ensure that keep the person informed about any decisions and action taken about them and always consider their needs and wishes.

7. How to respond to a concern

- Make a note of your concerns.
- Make a note of what the person has said using his or her own words as soon as practicable. Complete an Incident Form and submit to the Bridgnorth Tae Kwon-Do Welfare Officer.
- Remember to make safeguarding personal. Discuss your safeguarding concerns with the adult, obtain their view of what they would like to happen, but inform them it's your duty to pass on your concerns to your lead safeguarding or welfare officer.
- Describe the circumstances in which the disclosure came about.
- Take care to distinguish between fact, observation, allegation and opinion. It is important that the information you have is accurate.
- Be mindful of the need to be confidential at all times, this information must only be shared with your Lead Safeguarding or Welfare Officer and others on a need to know basis.
- If the matter is urgent and relates to the immediate safety of an adult at risk then contact the emergency services immediately.

8. Safeguarding Adults Flowchart

Dealing with Concerns, Suspicions or Disclosure



Remember to involve the adult at risk throughout the process wherever possible and gain consent for any referrals to social care if the person has capacity

9. Roles and responsibilities of those within Bridgnorth Tae Kwon-Do

- Bridgnorth Tae Kwon-Do is committed to having the following in place:
- A Welfare Officer to produce and disseminate guidance and resources to support the policy and procedures.
- A clear line of accountability within the organisation for work on promoting the welfare of all adults.
- Procedures for dealing with allegations of abuse or poor practice against members of staff and volunteers.
- A Steering Group or Case Management or Case Referral Group that effectively deals with issues, manages concerns and refers to a disciplinary panel where necessary (i.e. where concerns arise about the behaviour of someone within Bridgnorth Tae Kwon-Do.
- A Disciplinary Panel will be formed as required for a given incident, if appropriate and should a threshold be met.
- Arrangements to work effectively with other organisations to safeguard and promote the welfare of adults, including arrangements for sharing information.
- Appropriate whistle blowing procedures and an open and inclusive culture that enables safeguarding and equality and diversity issues to be addressed.
- Clear codes of conduct are in place for coaches, participants, officials, spectators and other relevant individuals.

10. Good practice, poor practice and abuse

Introduction

It can be difficult to distinguish poor practice from abuse, whether intentional or accidental.

It is not the responsibility of any individual involved in Bridgnorth Tae Kwon-Do to make judgements regarding whether or not abuse is taking place, however, all Bridgnorth Tae Kwon-Do personnel have the responsibility to recognise and identify poor practice and potential abuse, and act on this if they have concerns.

Good practice

Bridgnorth Tae Kwon-Do expects that that coaches of adult athletes:

- Adopt and endorse the Bridgnorth Tae Kwon-Do Coaches Codes of Conduct.
- Have completed a course in basic awareness in working with and Safeguarding Adults.

Everyone should:

- Aim to make the experience of Bridgnorth Tae Kwon-Do fun and enjoyable.
- Promote fairness and playing by the rules.
- Not tolerate the use of prohibited or illegal substances.
- Treat all adults equally and preserve their dignity; this includes giving more and less talented members of a group similar attention, time and respect.

11. Relevant Policies

This policy should be read in conjunction with the following policies

- Whistle Blowing
- Social media
- Complaints
- Disciplinary

12. Further Information

Policies, procedures and supporting information are available on the Bridgnorth Tae Kwon-Do website: www.bridgnorthtaekwondo.com

Welfare Officer: Anna Bradford, 07866 922 464 or bridgnorthtaekwondo@hotmail.co.uk

Review date

This policy will be reviewed every two years or sooner in the event of legislative changes or revised policies and best practice.

Appendix 1

Incident Report Form

Safeguarding Adults Incident form

To be completed as fully as possible if you have concerns regarding an adult. It is important to inform the adult about your concerns and that you have a duty to pass the information onto the safeguarding officer. The safeguarding officer will then look at the information and start to plan a course of action, in conjunction with yourself, the adult involved and if necessary social care or other relevant organisations.

Section 1 – details of adult at risk	
Name of adult	
Address	
Date of Birth	
Age if date of birth not known	
GP practice (if known)	
Contact number	
Section 2 – your details	
Name	
Contact phone number(s)	
Email address	
Line manager or alternative contact	
Name of organisation / club	
Your Role in organisation	
Section 3 – details of Concern	
Detail what you have seen/been told/other that makes you believe the adult at risk is being abused or is at risk of abuse (include dates/times/evidence from records/photos etc.)	

Section 4 - Abuse type(s) – please tick as many as you feel may apply		
Physical	Psychological	Financial
Sexual	Discriminatory	Organisational (formerly institutional)
Neglect	Hate incident/crime	Mate Crime
Internet abuse	Modern slavery	Female genital Mutilation (FGM)
Forced Marriage	Domestic abuse	Radicalisation
Self-Neglect		
Section 5 - Have you discussed your concerns with the adult? What are their views, what outcomes have they stated they want (if any)?		
Section 5A – Reasons for not discussing with the adult		
Adult lacks capacity		
Adult unable to communicate their views		
Discussion would increase the risk		
State why the risks would increase		
Section 5B - Have you discussed your concerns with anyone else? E.g. carer/parent. What are their views?		

Section 6 – What action have you taken /agreed with the adult to reduce the risks?	
Information passed to Safeguarding Officer, confirm details:	Referral to Social Care Confirm details:
Contact with the police Confirm details:	Referral to other agency – please confirm details:
Other – please state what	
No action agreed – state why	
Section 7 – Risk to others	
Are any other adults at risk Yes/No – delete as appropriate	
If yes state why and what actions have been taken to address these?	
Are any children at risk Yes/No Delete as appropriate	
If yes state why and what actions have been taken to address these?	
Signed:	
Date:	

OFFICE USE ONLY

Section 8 – sharing the concerns (To be completed by Lead Safeguarding Officer)

Details of your contact with the adult at risk. Have they consented to information being shared outside of Bridgnorth Tae Kwon-Do?

Details of contact with the Social Care Team where the adult at risk lives – advice can be still sought without giving personal details if you do not have consent for a referral

Details of any other agencies contacted

Details of the outcome of this concern

Appendix 2

Guidance and information

Making Safeguarding Personal

There has been a cultural shift towards Making Safeguarding Personal within the safeguarding process. This is a move from prioritising outcomes demanded by bureaucratic systems. The safeguarding process used to involve gathering a detailed account of what happened and determining who did what to whom. Now the outcomes are defined by the person at the centre of the safeguarding process.

The safeguarding process places a stronger emphasis on achieving satisfactory outcomes that take into account the individual choices and requirements of everyone involved. “What good is it making someone safer if it merely makes them miserable?” – Lord Justice Mundy, “What Price Dignity?” (2010)

What this means in practice is that adults should be more involved in the safeguarding process. Their views, wishes, feelings and beliefs must be taken into account when decisions are made.

The Care Act 2014 builds on the concept, stating that “We all have different preferences, histories, circumstances and lifestyles so it is unhelpful to prescribe a process that must be followed whenever a concern is raised.”

However, the Act is also clear that there are key issues that should be taken into account when abuse or neglect are suspected, and that there should be clear guidelines regarding this.

<https://www.local.gov.uk/topics/social-care-health-and-integration/adult-social-care/making-safeguarding-personal>

Capacity – Guidance on Making Decisions

The issue of capacity or decision making is a key one in safeguarding adults. It is useful for organisations to have an overview of the concept of capacity.

We make many decisions every day, often without realising. We make so many decisions that it's easy to take this ability for granted.

But some people are only able to make some decisions, and a small number of people cannot make any decisions. Being unable to make a decision is called "lacking capacity".

To make a decision we need to:

- Understand information
- Remember it for long enough
- Think about the information
- Communicate our decision

A person's ability to do this may be affected by things like learning disability, dementia, mental health needs, acquired brain injury, and physical ill health.

The Mental Capacity Act 2005 (MCA) states that every individual has the right to make their own decisions and provides the framework for this to happen.

The MCA is about making sure that people over the age of 16 have the support they need to make as many decisions as possible.

The MCA also protects people who need family, friends, or paid support staff to make decisions for them because they lack capacity to make specific decisions.

Our ability to make decisions can change over the course of a day.

Here are some examples that demonstrate how the timing of a question can affect the response:

- A person with epilepsy may not be able to make a decision following a seizure.
- Someone who is anxious may not be able to make a decision at that point.
- A person may not be able to respond as quickly if they have just taken some medication that causes fatigue.

In each of these examples, it may appear as though the person cannot make a decision. But later in the day, presented with the same decision, they may be able to at least be involved. The MCA recognises that capacity is decision-specific, so no one will be labelled as entirely lacking capacity. The MCA also recognises that decisions can be about big life-changing events, such as where to live, but equally about small events, such as what to wear on a cold day.

To help you to understand the MCA, consider the following five points:

1. Assume that people are able to make decisions, unless it is shown that they are not. If you have concerns about a person's level of understanding, you should check this with them, and if applicable, with the people supporting them.
2. Give people as much support as they need to make decisions. You may be involved in this – you might need to think about the way you communicate or provide information, and you may be asked your opinion.

3. People have the right to make unwise decisions. The important thing is that they understand the implications. If they understand the implications, consider how risks might be minimised.
4. If someone is not able to make a decision, then the person helping them must only make decisions in their “best interests”. This means that the decision must be what is best for the person, not for anyone else. If someone was making a decision on your behalf, you would want it to reflect the decision you would make if you were able to.
5. Find the least restrictive way of doing what needs to be done.

Remember:

- You should not discriminate or make assumptions about someone’s ability to make decisions, and you should not pre-empt a best-interest’s decision merely on the basis of a person’s age, appearance, condition, or behaviour.
- When it comes to decision-making, you could be involved in a minor way, or asked to provide more detail. The way you provide information might influence a person’s ultimate decision. A person may be receiving support that is not in-line with the MCA, so you must be prepared to address this.

Consent and Information Sharing

Workers and volunteers within sports and physical activity organisations should always share safeguarding concerns in line with their organisation's policy, usually with their safeguarding lead or welfare officer in the first instance, except in emergency situations. As long as it does not increase the risk to the individual, the worker or volunteer should explain to them that it is their duty to share their concern with their safeguarding lead or welfare officer.

The safeguarding lead or welfare officer will then consider the situation and plan the actions that need to be taken, in conjunction with the adult at risk and in line with the organisation's policy and procedures and local safeguarding adults board policy and procedures.

To make an adult safeguarding referral you need to call the local safeguarding adults team. This may be part of a MASH (*Multi-Agency Safeguarding Hub*). A conversation can be had with the safeguarding adults team without disclosing the identity of the person in the first instance. If it is thought that a referral needs to be made to the safeguarding adults team, consent should be sought where possible from the adult at risk.

Individuals may not give their consent to the sharing of safeguarding information with the safeguarding adult's team for a number of reasons. Reassurance, appropriate support and revisiting the issues at another time may help to change their view on whether it is best to share information.

If they still do not consent, then their wishes should usually be respected. However, there are circumstances where information can be shared without consent such as when the adult does not have the capacity to consent, it is in the public interest because it may affect other people or a serious crime has been committed. This should always be discussed with your safeguarding lead and the local authority safeguarding adults team.

If someone does not want you to share information outside of the organisation or you do not have consent to share the information, ask yourself the following questions:

- Is the adult placing themselves at further risk of harm?
- Is someone else likely to get hurt?
- Has a criminal offence occurred? This includes: theft or burglary of items, physical abuse, sexual abuse, forced to give extra money for lessons (financial abuse) or harassment.
- Is there suspicion that a crime has occurred?

If the answer to any of the questions above is 'yes' - then you can share without consent and need to share the information.

When sharing information there are seven Golden Rules that should always be followed.

1. Seek advice if in any doubt
2. Be transparent - The Data Protection Act (DPA) is not a barrier to sharing information but to ensure that personal information is shared appropriately; except in circumstances where by doing so places the person at significant risk of harm.
3. Consider the public interest - Base all decisions to share information on the safety and well-being of that person or others that may be affected by their actions.
4. Share with consent where appropriate - Where possible, respond to the wishes of those who do not consent to share confidential information. You may still share information without consent, if this is in the public interest.
5. Keep a record - Record your decision and reasons to share or not share information.

6. Accurate, necessary, proportionate, relevant and secure - Ensure all information shared is accurate, up-to-date; necessary and share with only those who need to have it.
7. Remember the purpose of the Data Protection Act (DPA) is to ensure personal information is shared appropriately, except in circumstances where by doing so may place the person or others at significant harm.

Appendix 3

Legislation and Government Initiatives

Sexual Offences Act 2003

<http://www.legislation.gov.uk/ukpga/2003/42/contents>

The Sexual Offences Act introduced a number of new offences concerning vulnerable adults and children. www.opsi.gov.uk

Mental Capacity Act 2005

<http://www.legislation.gov.uk/ukpga/2005/9/introduction>

Its general principle is that everybody has capacity unless it is proved otherwise, that they should be supported to make their own decisions, that anything done for or on behalf of people without capacity must be in their best interests and there should be least restrictive intervention. www.dca.gov.uk

Safeguarding Vulnerable Groups Act 2006

<http://www.legislation.gov.uk/ukpga/2006/47/contents>

Introduced the new Vetting and Barring Scheme and the role of the Independent Safeguarding Authority. The Act places a statutory duty on all those working with vulnerable groups to register and undergo an advanced vetting process with criminal sanctions for non-compliance. www.opsi.gov.uk

Deprivation of Liberty Safeguards

<https://www.gov.uk/government/collections/dh-mental-capacity-act-2005-deprivation-of-liberty-safeguards>

Introduced into the Mental Capacity Act 2005 and came into force in April 2009. Designed to provide appropriate safeguards for vulnerable people who have a mental disorder and lack the capacity to consent to the arrangements made for their care or treatment, and who may be deprived of their liberty in their best interests in order to protect them from harm.

Disclosure & Barring Service 2013

<https://www.gov.uk/government/organisations/disclosure-and-barring-service/about>

Criminal record checks: guidance for employers - How employers or organisations can request criminal records checks on potential employees from the Disclosure and Barring Service (DBS). www.gov.uk/dbs-update-service

The Care Act 2014 – statutory guidance

<http://www.legislation.gov.uk/ukpga/2014/23/introduction/enacted>

The Care Act introduces new responsibilities for local authorities. It also has major implications for adult care and support providers, people who use services, carers and advocates. It replaces No Secrets and puts adult safeguarding on a statutory footing.

Making Safeguarding Personal Guide 2014

<http://www.local.gov.uk/documents/10180/5852661/Making+Safeguarding+Personal+-+Guide+2014/4213d016-2732-40d4-bbc0-d0d8639ef0df>

This guide is intended to support councils and their partners to develop outcomes-focused, person-centred safeguarding practice.

Appendix 4

Useful contacts

Local Authority Safeguarding Lead

Name: First Point of Contact

Telephone: 03456 789044 (or, out of hours, 03456 789040)

Ann Craft Trust - Safeguarding Adults in Sport and Activity:

Website: www.anncrafttrust.org

Email: Ann-Craft-Trust@nottingham.ac.uk

Telephone: 0115 951 5400